

CATEGORY: INNER PORTLAND INFILL SITE

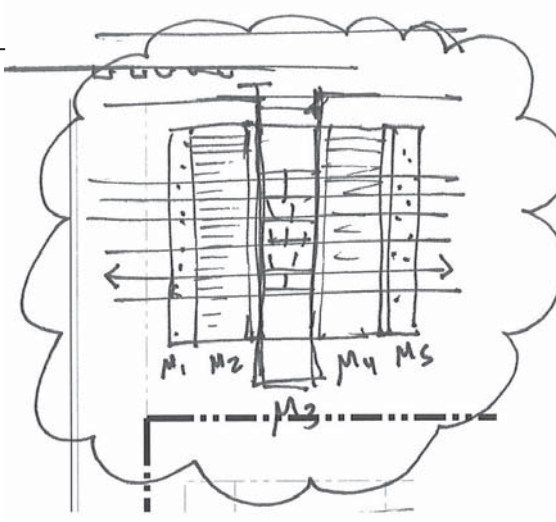
LIMINAL YARD

PROJECT DATA:

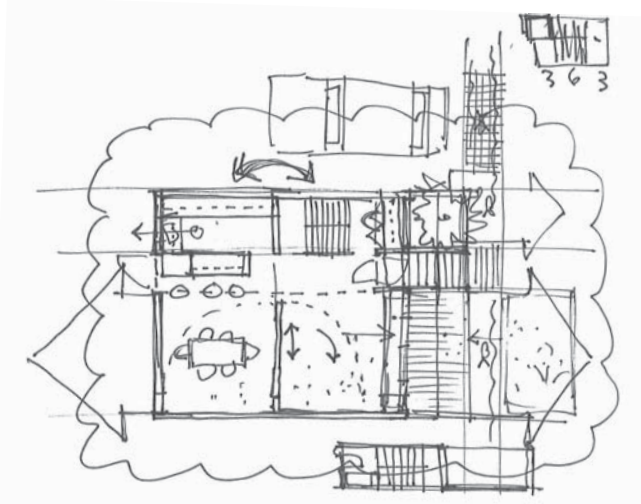
TOTAL UNITS:	6
MAX. UNIT HEIGHT:	41'-6"
TOTAL COVERED AREA:	4,825 SF
LOT COVERAGE:	48.25%
TOTAL BUILDING AREA:	12,089 GSF

UNIT	FLRS.	BEDRMS.	AREA
A	2	1	1,083 GSF
B	4	3+	2,538 GSF
C	3.5	3	2,020 GSF
D	3	3	1,890 GSF
E	4	3+	2,538 GSF
F	3.5	3	2,020 GSF

This project proposes a community of six condominium townhomes, "woven" together by a series of parallel landscape "ribbons" which span the site and define a central, organizing courtyard. The ribbons consist of various natural and man-made urban surface materials, allowing the south-oriented courtyard to support a broad range of activities and programs, including children's playspace, recreation, gardening, and community events. The ribbons also form the basis of a storm water management and rain harvesting mechanism - their various porous and/or perforated surfaces allow run-off to collect in channels and cisterns integrated below the court's walkways and parking.



PROGRAM + MATERIALS "RIBBONS"



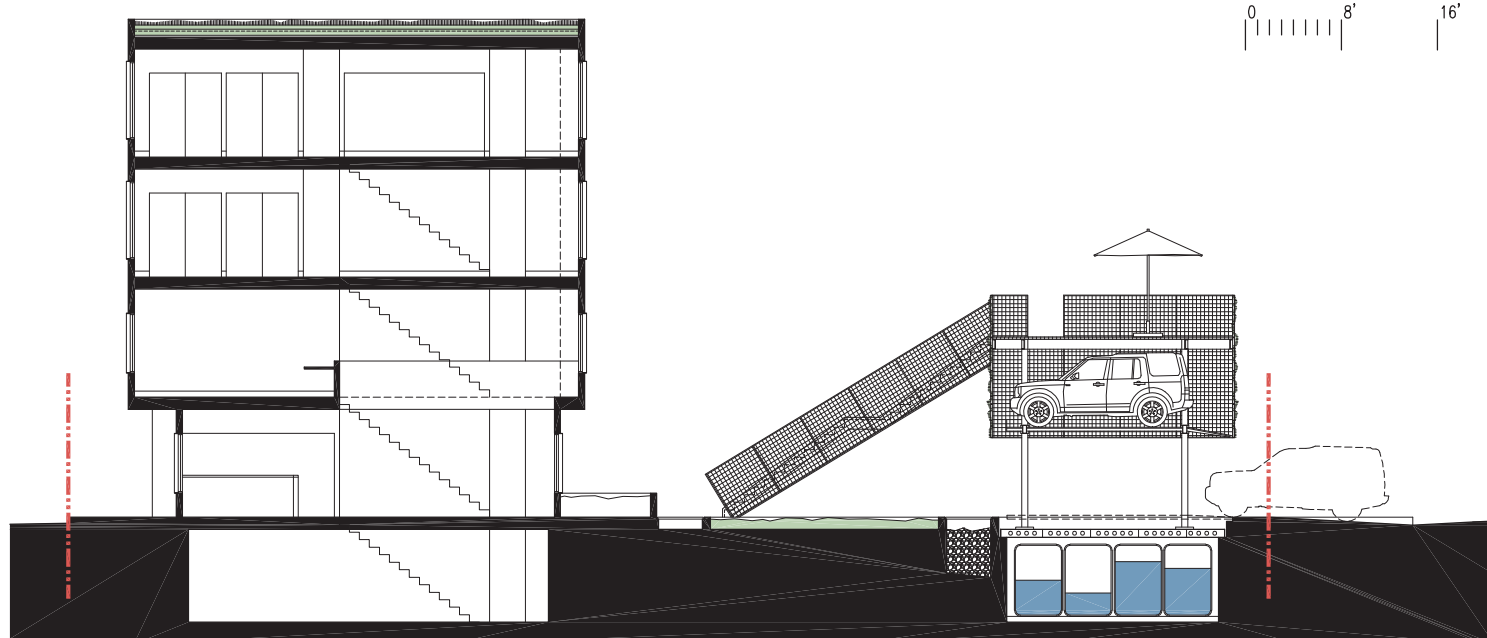
THRESHOLDS



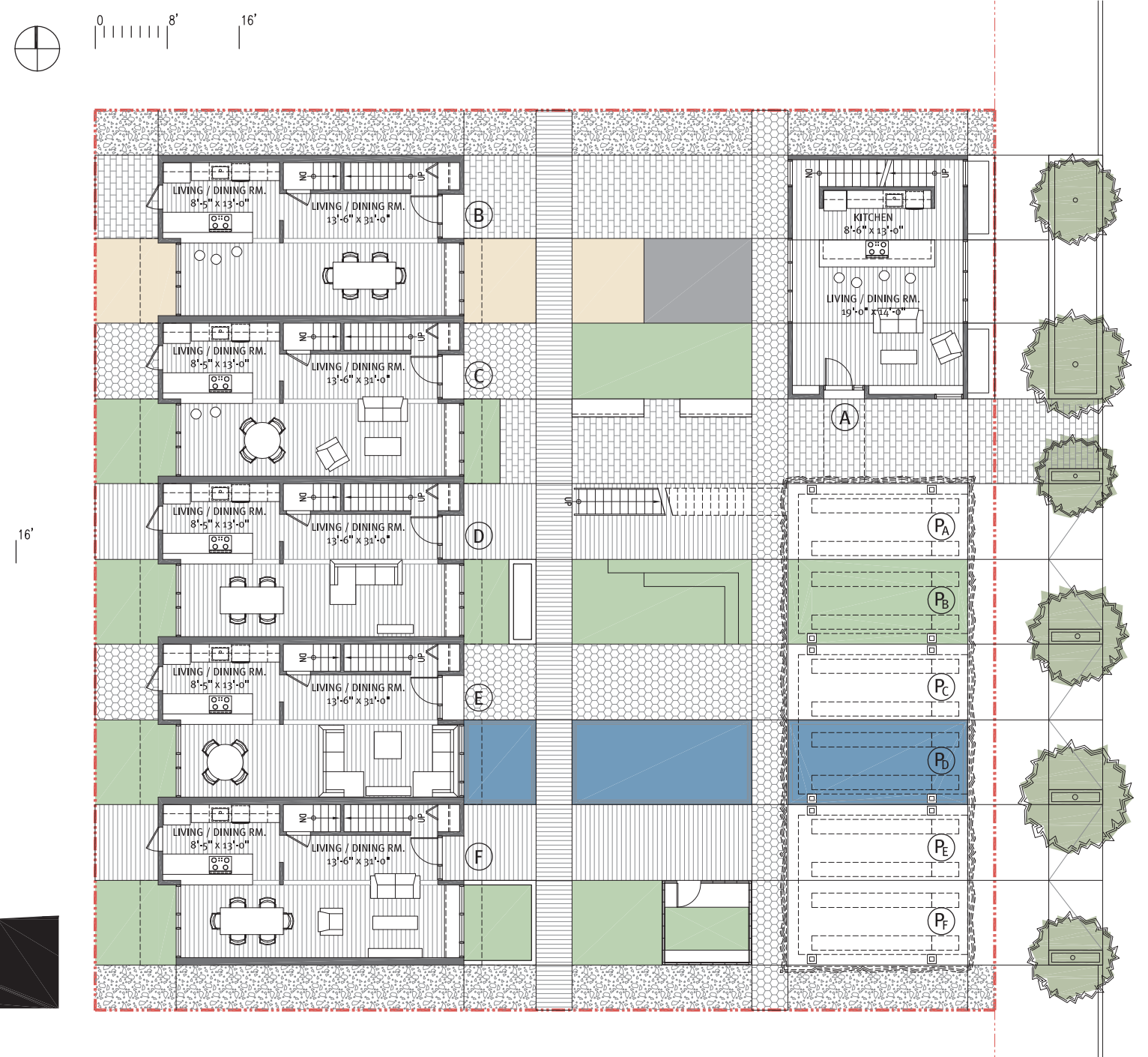
OVERHEAD VIEW OF COURTYARD, PARKING, EVENT PAVILION AND UNITS.



RIBBONS OF PROGRAM AND MATERIALS ARE INTERWOVEN TO PROMOTE VARIOUS USES WHILE PROVIDING A CENTRAL, COHESIVE COMMUNITY SPACE.



EAST-WEST SECTION



GROUND FLR. PLAN / SITE PLAN