

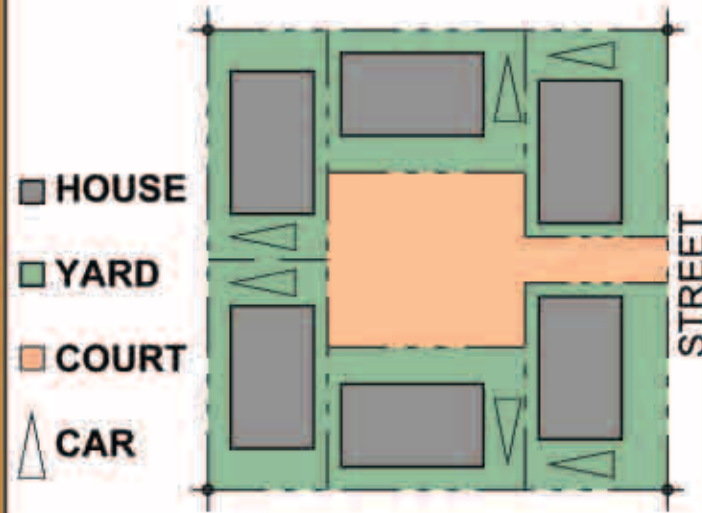
**COURTYARD HOUSING FOR FAMILIES
INNER PORTLAND INFILL SITE**

TOTAL UNITS:	6	TOTAL SF ON SITE:	8958 SF
MAIN FLOOR SF:	543	BUILDING COVERAGE:	34%
TOTAL UNIT SF:	1493	MAXIMUM HEIGHT:	+/- 31'

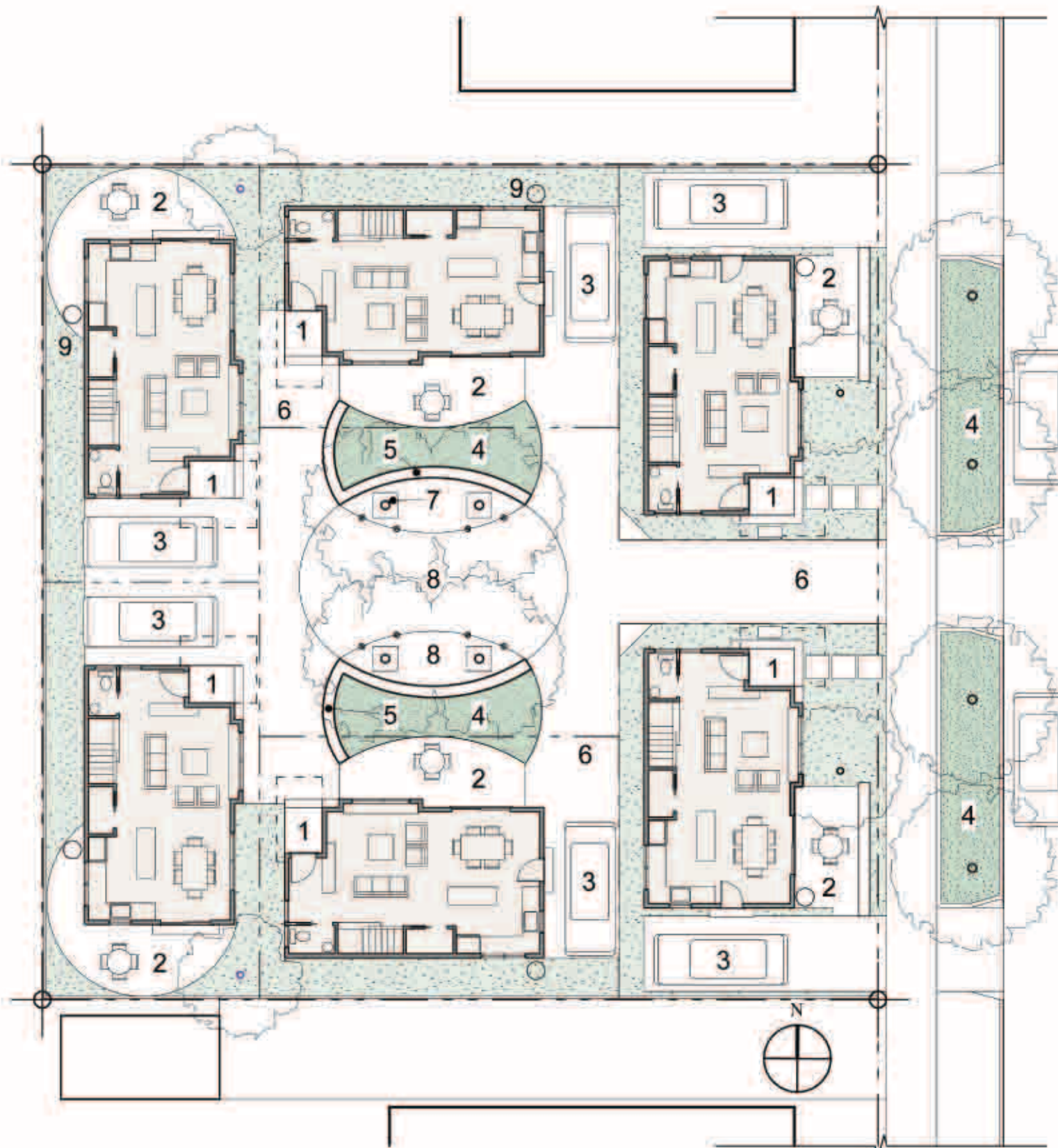
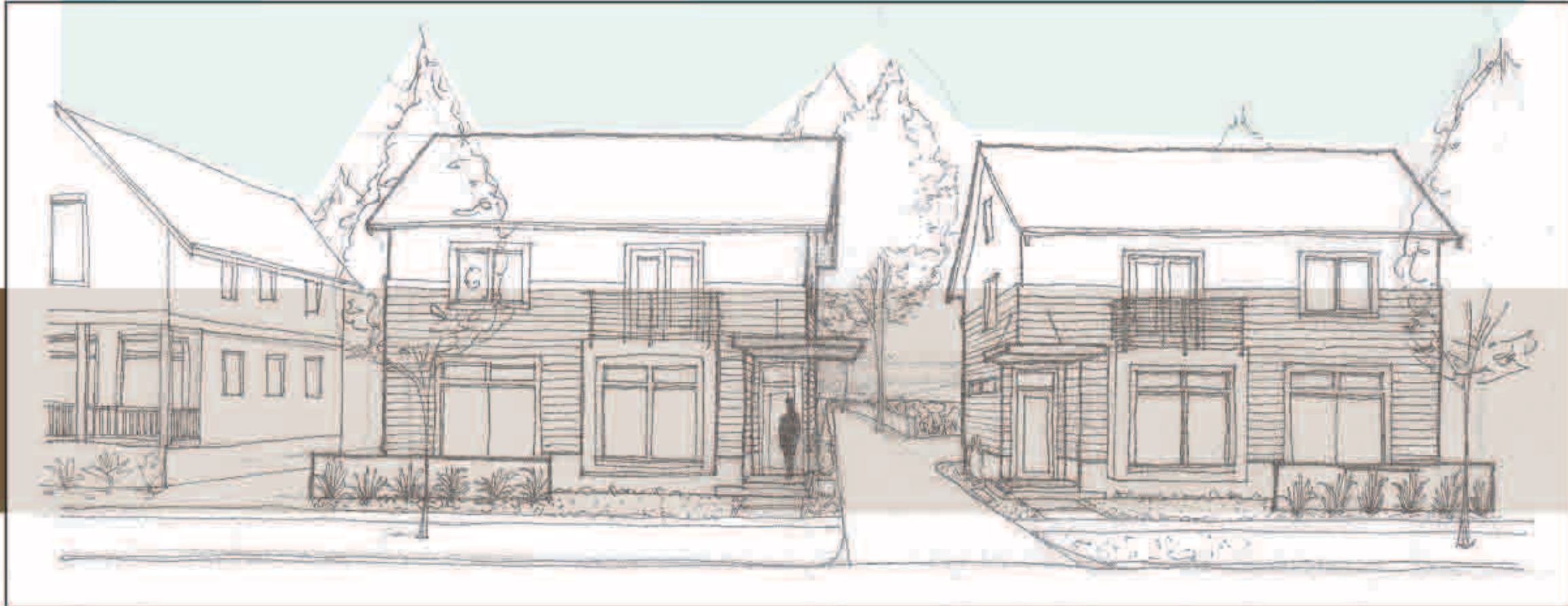
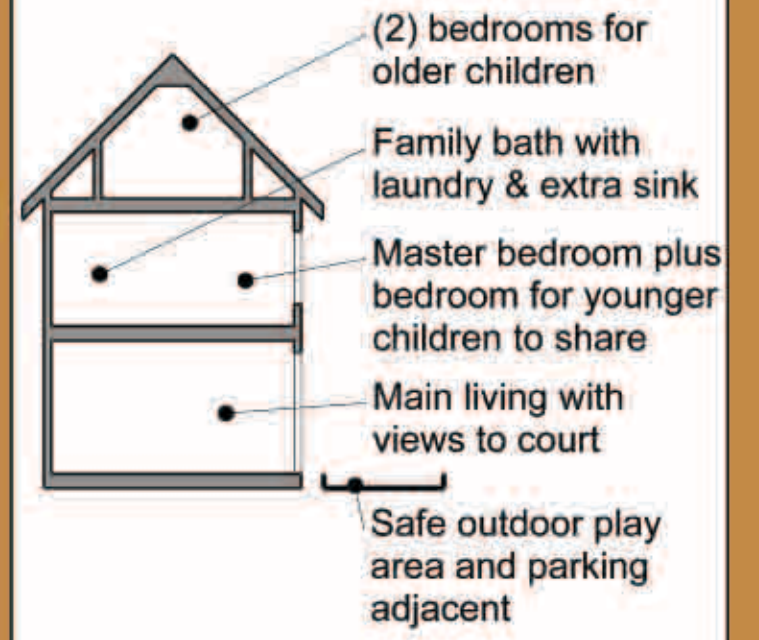
This proposal provides six separate compact but functional residences for families, each on their own lot. The traditional gable roofed massing allows the project to become part of the fabric of a typical Portland neighborhood while modern proportions, materials and floor plans make it appropriate for today. The main living spaces are at the ground level so that child play can easily spill outside with indoor supervision. The project allows for parking on site, close to each residence, without letting the car dominate the space. The design of the court provides room and opportunities for creative play. Low walls and trees act as climbing structures and a large area of smooth concrete allows for bike riding, chalk art, roller skating, and ball play.

VERSATILE COURTYARD

This courtyard provides automobile circulation and stormwater management while still letting children's play dominate.



FUNCTIONAL HOMES

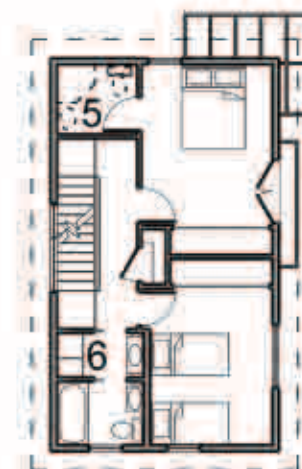


SITE PLAN

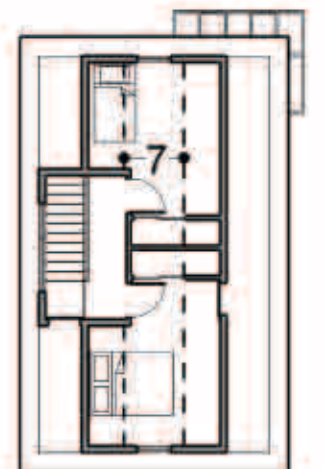
1. ENTRY STOOP
2. SEMI-PRIVATE PATIO
3. PARKING
4. STORM WATER PLANTER
5. 24" HIGH WALL
6. PERVIOUS PAVING
7. DECIDUOUS TREES W/ BOLLARDS
8. SMOOTH CONCRETE FOR PLAY
9. RAIN BARREL, TYPICAL



1. ENTRY
2. POWDER
3. WINDOW SEAT
4. MECHANICAL



5. FUTURE BATH
6. LAUNDRY



7. EDGE OF 7'-0" CEILING