

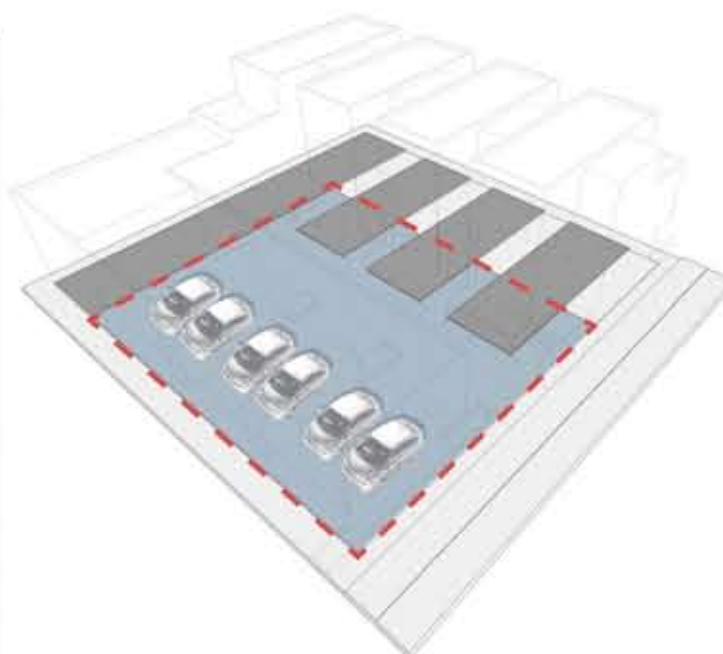
COURTSIDE

inner portland infill site

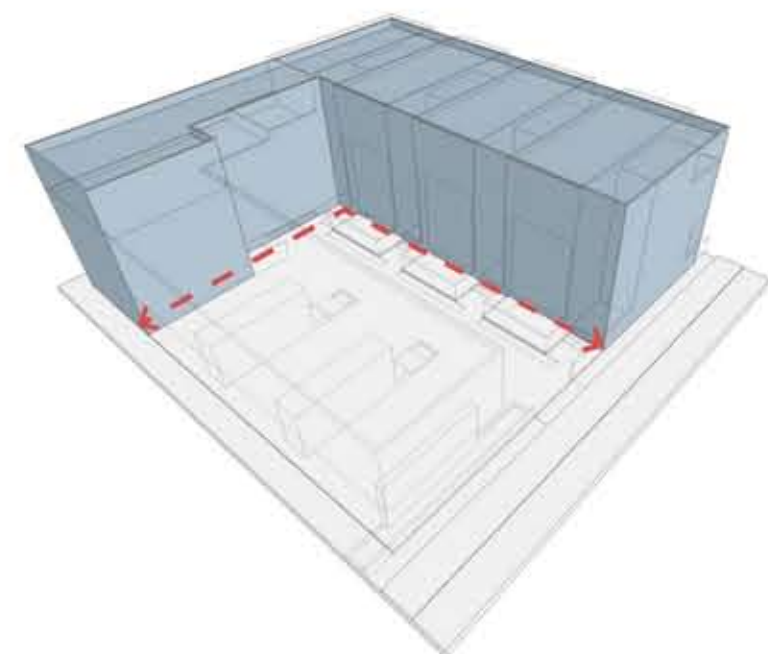
concentrates outdoor space into one contiguous court
 defines both **shared** and **private** use areas
 creates covered and open areas for **year-round** uses
concentrates parking to maximize at-grade living areas
 all individual living areas front court
 sectional ground variation for use and water management
 constructed from a **repeatable**, family sized, building type
carved for daylight and views
flexible program and inhabitation strategies
 building heights maximize daylight
 story and program variation (demographic variation)

unit	sq.ft.in	sq.ft.out
A	2028	386
B	2028	386
C	2028	386
D	1796	322
E	834	173
F	1588	146
G	830	106
H	917	114
8 units	12049	2019

site coverage = 5806 sq.ft.
 = 58 %
 max. height = 34 ft.



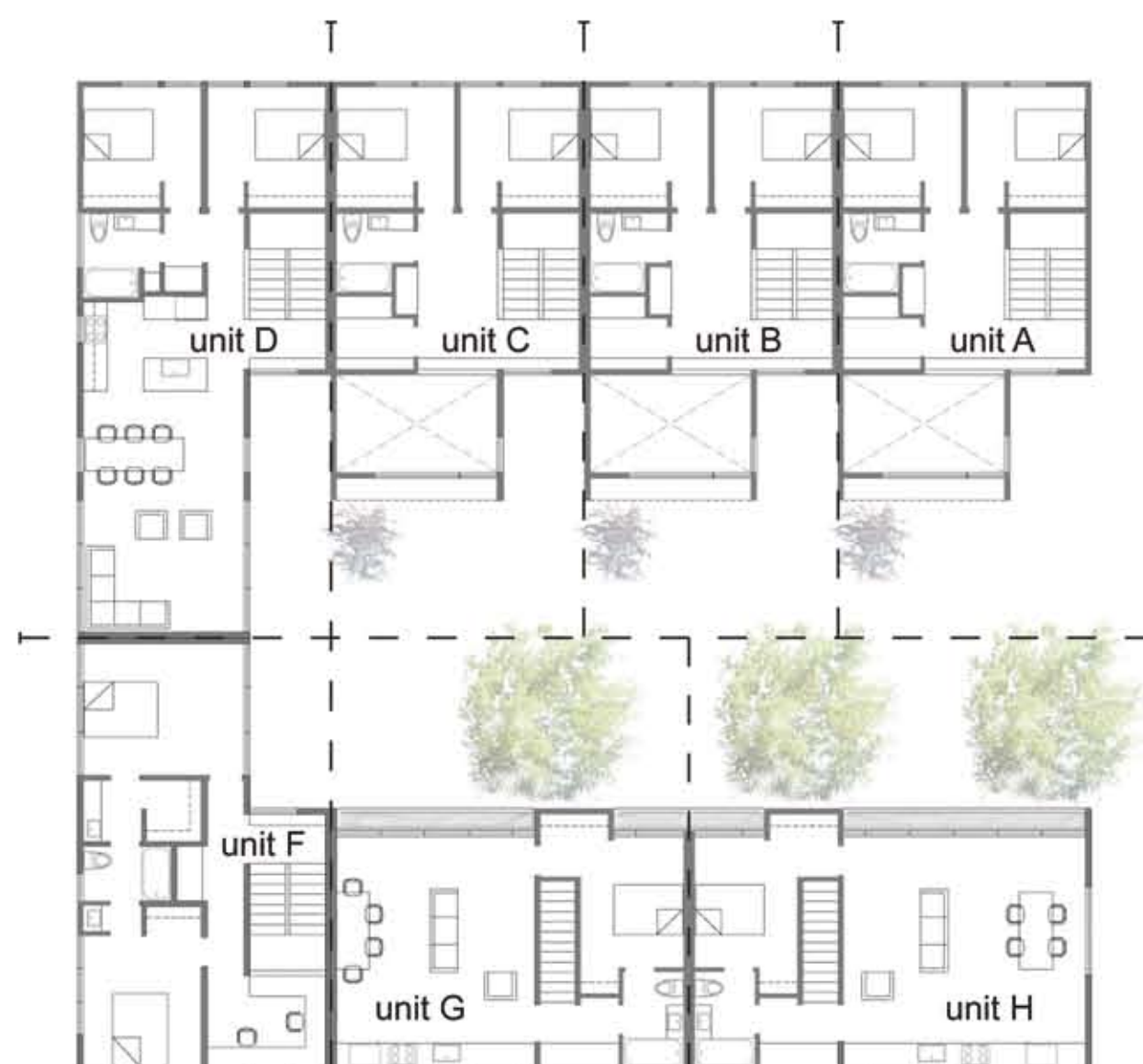
contiguous open space + ground level living



edge density



△ courtyard level plan 0 3 10 20



second level plan