

CONTAINER COURT VILLAS

New options for affordable urban living arise with dynamic presence in a 10 home, 4 villa-unit cluster focused on an interactive court, opening to a welcoming street forecourt. Recycled shipping containers, *modified, joined, stacked*, form structural enclosure of units. Containers span open parking below, allowing resident use of court. Brightly painted steel is offset by soft textures of wood decks, trellises, grass-crete pavers, eco-roofs and gardens, creating a happy, inviting place for all. Variety in unit sizes provides for diversity of resident types.

DATA: R-1 zone, 10 dwelling units
 2 - 1 BR + 1 Ba @ 512 S.F.
 2 - 2 BR + 2 1/2 Ba @ 1152 S.F. duplex
 4 - 3 BR + 2 Ba @ 1232 S.F.
 2 - 4 BR + 2 1/2 Ba @ 1600 S.F. duplex

Total enclosed area: 11,456 S.F.
 Site coverage: 58% = 42% open
 + 1950 S.F. roof gardens
 Average height of pitched roof: + 43' - 6"

4 VILLA STRUCTURES FRAME COURTYARD

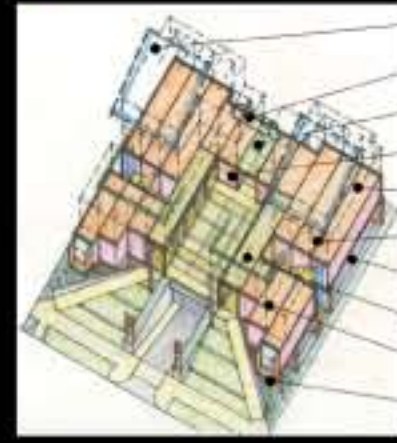
- SETBACK AND SC ALE RELATE TO STREET CONTEXT
- COURT EXTENDS INTO OPEN LOGGIAS, BRIDGES & STAIRS
- COURT OPENS HORIZONTALLY & VERTICALLY TO EXTERIOR



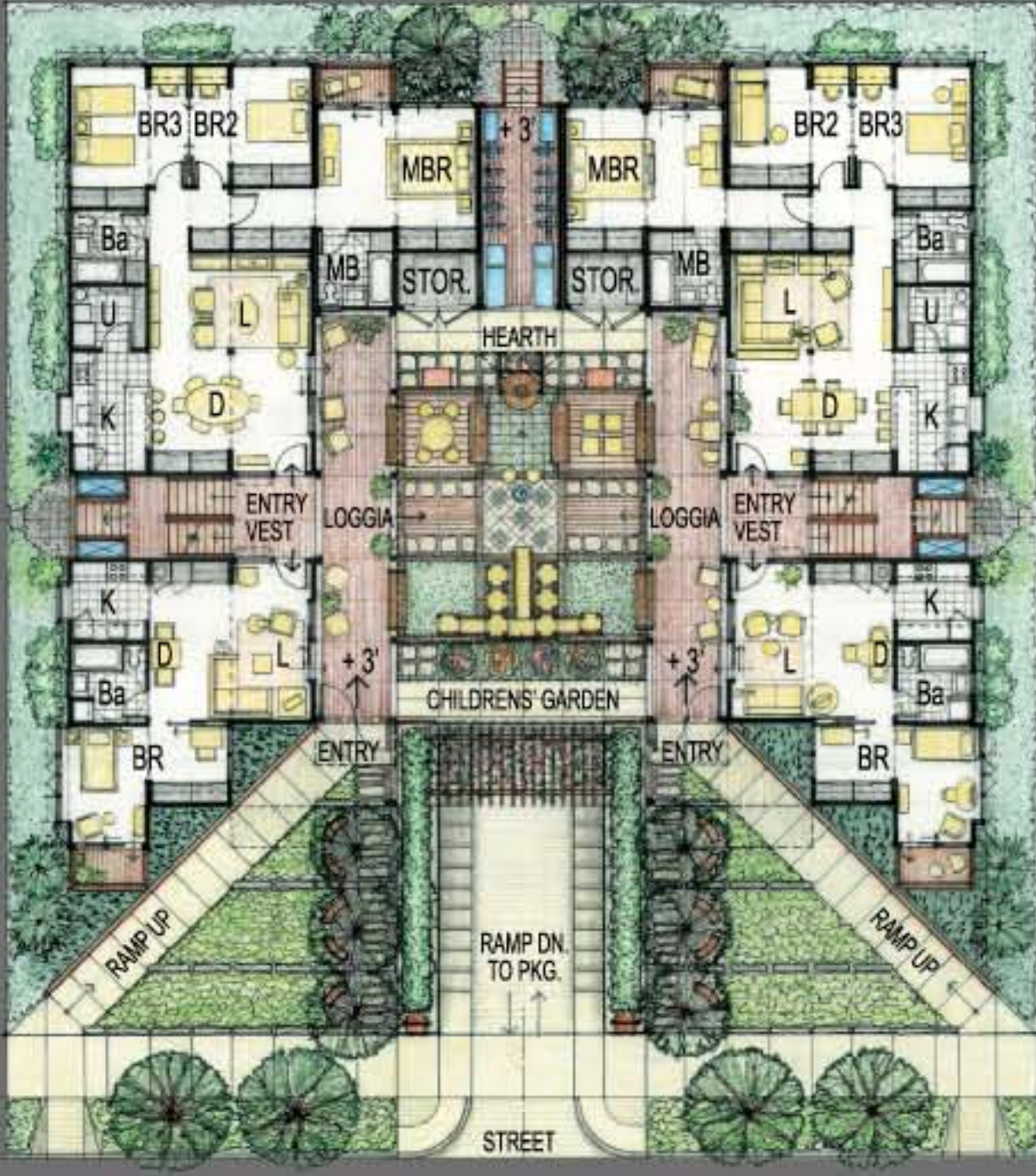
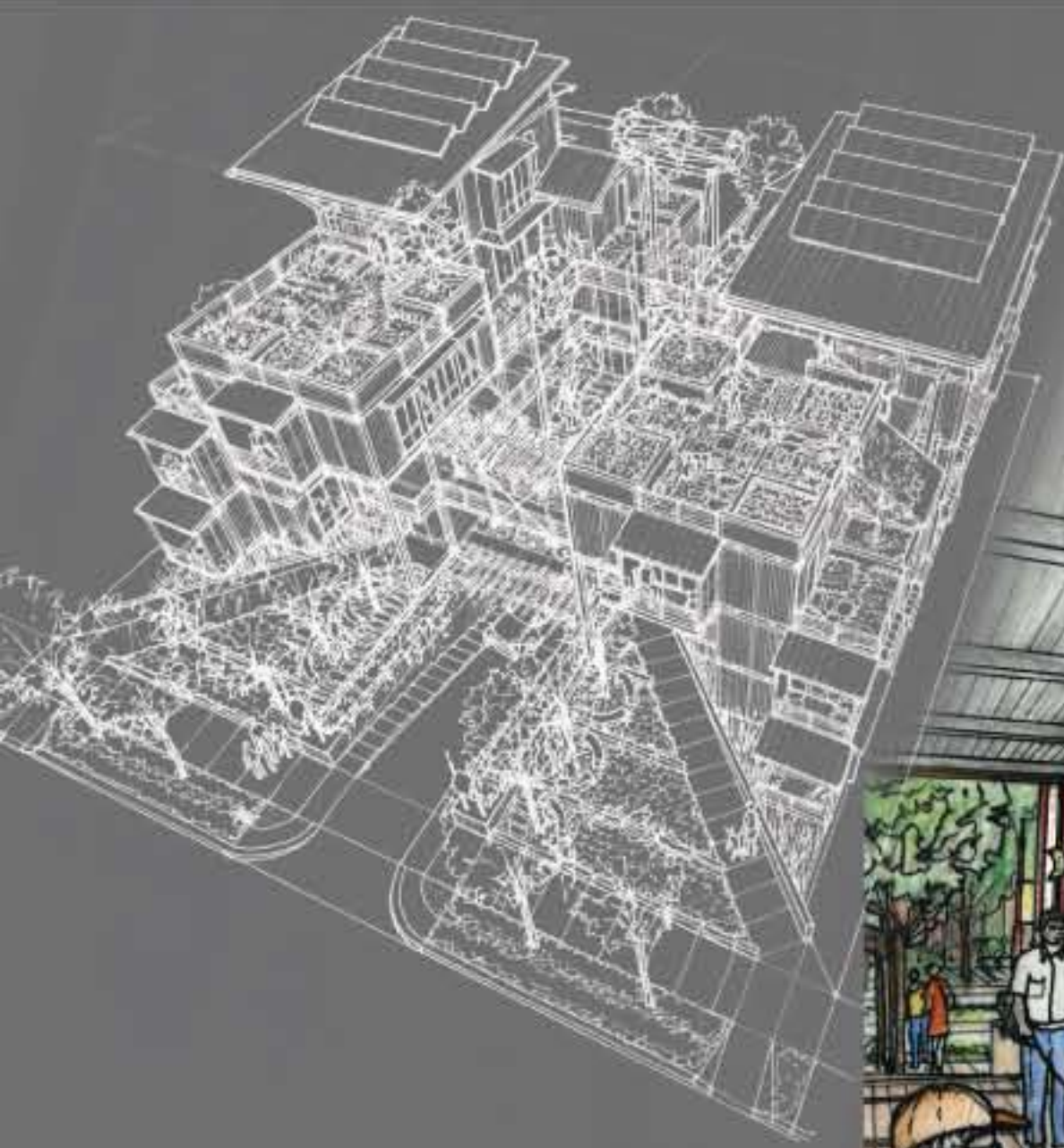
individual balconies
 common functions
 4 levels: 3 units
 loggia and open front porch
 open stair and mech. chase
 apt. entries off court
 courtyard activities
 3 levels: 2 units
 bridge and trellis transition
 vehic. ramp with steps up

RESUED ISO STEEL SHIPPING CONTAINERS

- DURABLE, SAFE, ADAPTABLE, MATERIAL AS BUILDING SYSTEM
- JOIN, STACK, CUT, OPEN, STRUCTURE THEM AS NEEDED
- DIVERSIFIED MASS PRODUCTION - ACCESSORY SYSTEMS



PV options on roof
 wind turbine option
 eco-vegetation rooftop option
 shared storage module
 cont. stacked: integral struct.
 cont. structure: joined
 cont. spans open parking
 cont. deck: loggia and entry
 cont. spliced: cut to length
 cont. doors: support balcony



FP SITE PLAN - LEVEL 1

GROUND FLOOR UNIT MIX
 • (1) 3 BR: 1232 S.F.
 • (1) 1 BR: 512 S.F.
 • (1) 3 BR: 1232 S.F.
 • (1) 1 BR: 512 S.F.



FP FLOOR PLAN - LEVEL 2

SECOND FLOOR UNIT MIX
 • (1) 3 BR: 1232 S.F.
 • (1) 2 BR DUPLEX: LOWER 512 S.F.
 • (1) 3 BR: 1232 S.F.
 • (1) 2 BR DUPLEX: LOWER 512 S.F.